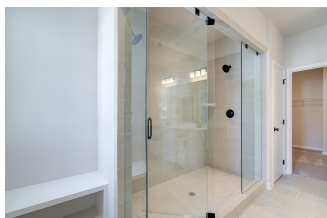


The Medlock



More to Come Home to...



2 Story
3 Bedroom / 2.5 Baths
Approx. 1,850 sq ft

These photos DO contain many upgrades, please see agent for prices.

In a continuous effort by Chafin Communities to improve the quality of your home, we reserve the right to change features, options, plans, and specifications without notice. **Floor plans and elevation renderings are artists' concepts for marketing purposes only AND DO NOT INCLUDE UPGRADES not available at all communities - see sales agent for details.** Elevations, floor plans, options, and standard features will vary based on actual homesite (Chafin Communities may be required to build the home in a mirror image to the floor plans shown) due to construction and/or building design requirements of the homesite. Significant changes may be made during or after the construction of the model homes. Chafin Communities reserves the right to modify, relocate or eliminate any or all of the features, specifications, plan utilities, design, or shape thereof without notice or obligations to the purchaser. Please see your onsite sales associate for additional information.

CHAFIN
COMMUNITIES
Move To Come Home to...
A Berkshire Hathaway Company



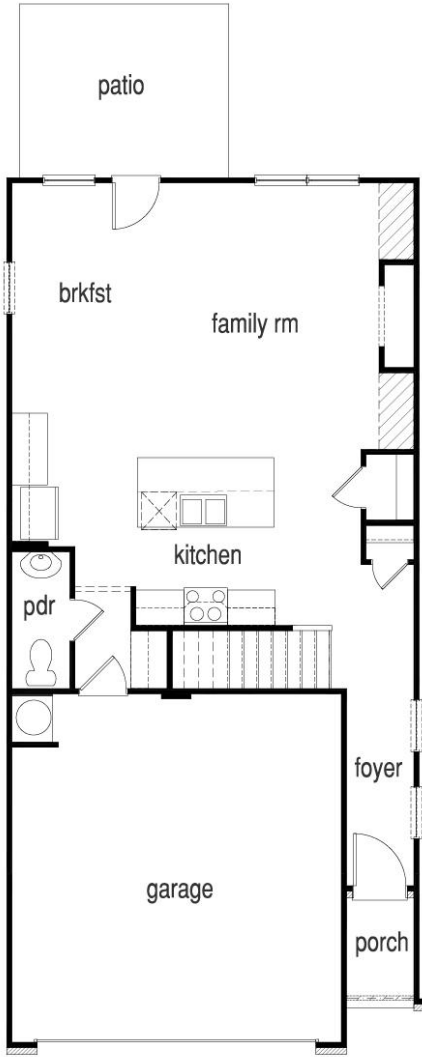
CHAFINCOMMUNITIES.COM

Subject to errors, omissions, and changes without notice. Believed accurate, but NOT warranted.

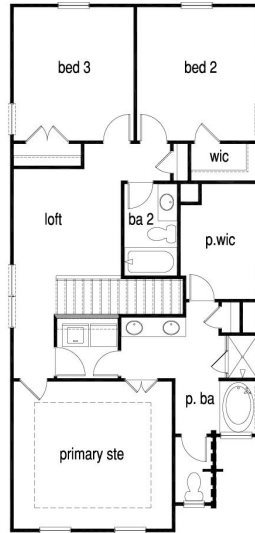
More to Come Home to...

The Medlock

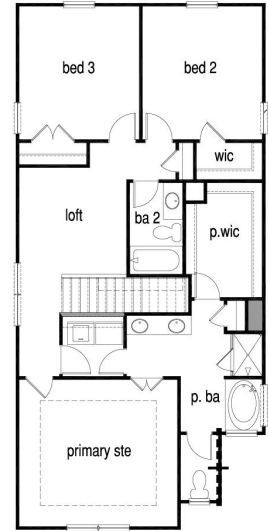
2 Story / 3 Bedroom / 2.5 Baths / Approx. 1,850 sq ft



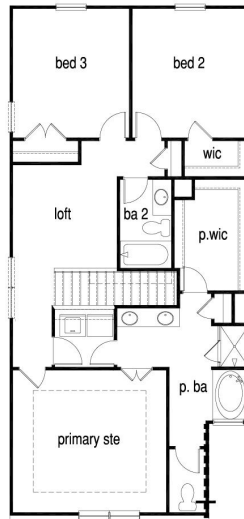
First Floor



Second Floor CB1



Second Floor CB2



Second Floor CB3

In a continuous effort by Chafin Communities to improve the quality of your home, we reserve the right to change features, options, plans, and specifications without notice. Floor plans and elevation renderings are artists' concepts for marketing purposes only AND DO NOT INCLUDE UPGRADES not available at all communities - see sales agent for details. Elevations, floor plans, options, and standard features will vary based on actual homesite (Chafin Communities may be required to build the home in a mirror image to the floor plans shown) due to construction and/or building design requirements of the homesite. Significant changes may be made during or after the construction of the model homes. Chafin Communities reserves the right to modify, relocate or eliminate any or all of the features, specifications, plan utilities, design, or shape thereof without notice or obligations to the purchaser. Please see your onsite sales associate for additional information.

CHAFIN
COMMUNITIES
Move To Come Home to...
A Berkshire Hathaway Company