



**CHAFIN**  
**COMMUNITIES**  
*More To Come Home to...*  
*A Berkshire Hathaway Company*

# The Towns at Auburn Station West

Barrow County • Auburn, GA  
 Townhomes From the \$300K+

## Resort-Style Amenities

Welcome to Auburn Station a large planned community with several sections. Each section has its own unique floor plans and options to suit many different lifestyles. All the sections can enjoy the amazing amenities package of a fitness and yoga center, green space, pool and water slide, clubhouse, and more.



**Directions: I-85N, Exit Hwy 316E, Go about 5 miles to a left only Hwy 29 Business,. Take Hwy 29 Business go about 4/.5 miles to Auburn Station on right just after Barrow County Line.**

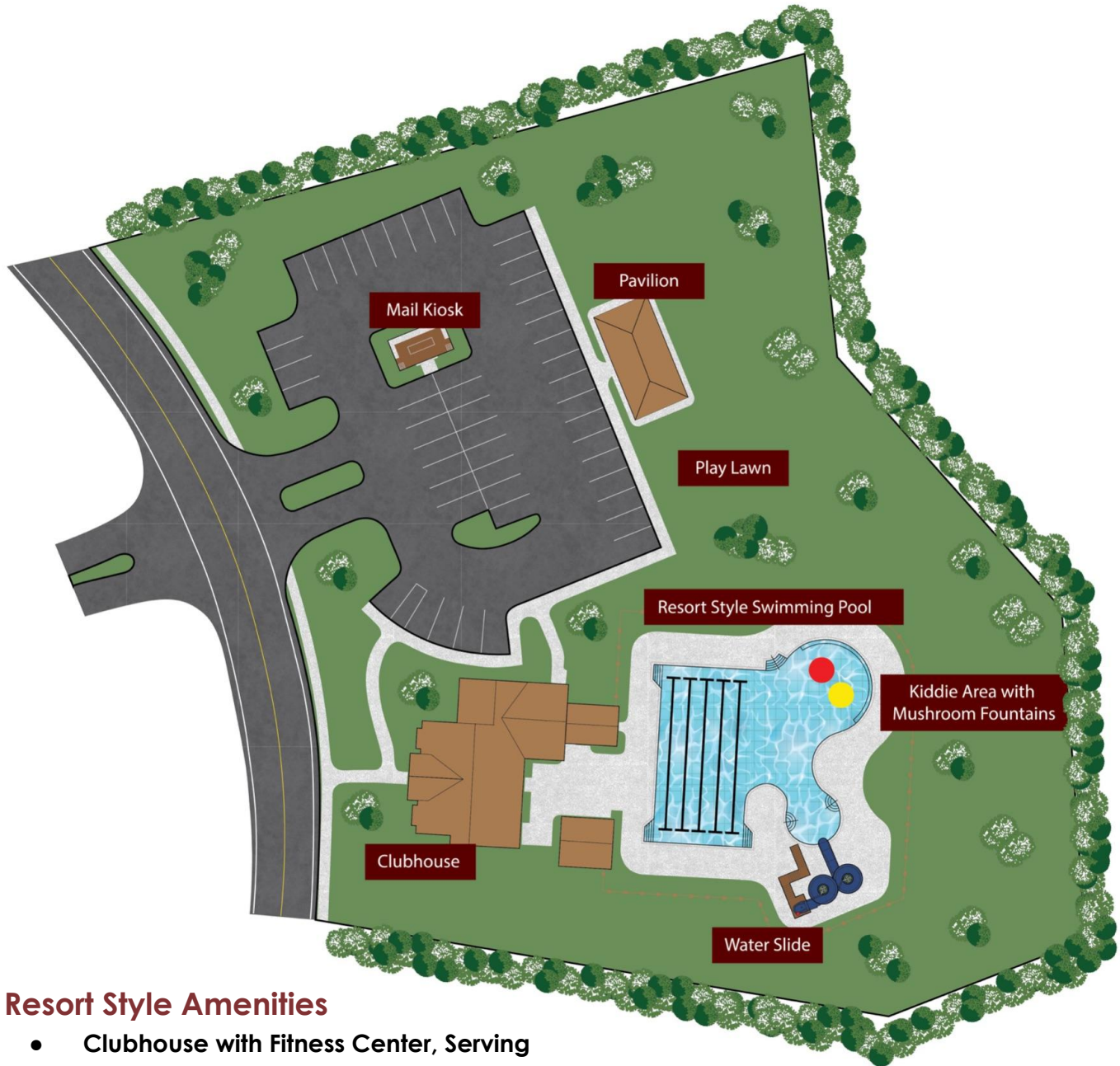
**CHAFINCOMMUNITIES.COM**

This is subject to errors, omissions, and changes without notice.



*More to Come Home to...*

## The Towns at Auburn Station West



### Resort Style Amenities

- Clubhouse with Fitness Center, Serving Kitchen, and Community Rooms
- Swimming Pool with Water Slide, Mushroom Fountains, and Splashdown Pool
- Kiddie Area in Pool
- Pavilion with Picnic Tables and Green Space

This site map artistic rendering is provided for illustrative purposes only and is not intended to be a precise representation of the final subdivision and for marketing purposes. The images, designs, and features depicted in this rendering are conceptual and may be subject to change during the development process. The actual layout, dimensions, landscaping, and amenities of the subdivision may vary from what is shown in this rendering. The builder/developer reserves the right to make modifications, alterations, or improvements to the subdivision without notice. All details, including but not limited to building placements, landscaping, and infrastructure, are subject to approval by relevant authorities. This rendering does not constitute a legal document, and potential buyers, investors, or interested parties are advised to refer to the final recorded plat, architectural plans, and legal descriptions for accurate and detailed information about the subdivision. Any reliance on the information provided in this artistic rendering is at the viewer's own risk. The builder/developer, architects, and associated parties make no warranties, representations, or guarantees, expressed or implied, regarding the accuracy, completeness, or suitability of the information presented in this rendering. This disclaimer applies to both current and future versions of the rendering.

**CHAFIN**  
**COMMUNITIES**  
*More To Come Home to...*  
A Berkshire Hathaway Company



[CHAFINCOMMUNITIES.COM](http://CHAFINCOMMUNITIES.COM)

Subject to errors, omissions, and changes without notice. Believed accurate, but NOT warranted.

*More to Come Home to...*

# The Towns at Auburn Station West - Site Map



This site map artistic rendering is provided for illustrative purposes only and is not intended to be a precise representation of the final subdivision and for marketing purposes. The images, designs, and features depicted in this rendering are conceptual and may be subject to change during the development process. The actual layout, dimensions, landscaping, and amenities of the subdivision may vary from what is shown in this rendering. The builder/developer reserves the right to make modifications, alterations, or improvements to the subdivision without notice. All details, including but not limited to building placements, landscaping, and infrastructure, are subject to approval by relevant authorities. This rendering does not constitute a legal document, and potential buyers, investors, or interested parties are advised to refer to the final recorded plat, architectural plans, and legal descriptions for accurate and detailed information about the subdivision. Any reliance on the information provided in this artistic rendering is at the viewer's own risk. The builder/developer, architects, and associated parties make no warranties, representations, or guarantees, expressed or implied, regarding the accuracy, completeness, or suitability of the information presented in this rendering. This disclaimer applies to both current and future versions of the rendering.

**CHAFIN**  
**COMMUNITIES**  
*More To Come Home to...*  
A Berkshire Hathaway Company

[CHAFINCOMMUNITIES.COM](http://CHAFINCOMMUNITIES.COM)

Subject to errors, omissions, and changes without notice. Believed accurate, but NOT warranted.



## The Towns at Auburn Station West

### COMMUNITY AMENITIES

- Resort style swimming pool with water slide
- Kiddie area in pool & mushroom fountains
- Pavilion with picnic tables and green space
- Clubhouse with fitness center, serving kitchen & community room
- Professionally landscaped & sodded home sites (per builder discretion)
- Townhomes & sidewalks with community mailbox

### SMART HOME PACKAGE:

- White Glove Custom Setup
- Echo show 8"
- Ring front door bell camera
- Kwikset smart front door lock
- Ecobee smart thermostat main floor
- 2 smart light switches

### EXTERIOR QUALITY

- Traditional townhomes with brick accents & board and batten siding (per plan)
- 2 car garage with front entry
- Stamped garage doors with finished interiors
- Craftsman style 3 lite front entry door
- Bronze gutters with rectangular downspouts
- Coach light over garage door

### INTERIOR QUALITY

- 9ft ceilings first floor & 8ft ceilings second floor
- Elegant trim package
- Mud Rooms with valet and cubbies (per plan)
- Optional upgrade: electric fireplace in Great Room
- Primary Suite square single tray ceiling
- 5 panel interior doors
- Satin nickel hardware, plumbing and lighting package
- Pre-wire and brace for ceiling fan in Great Room & Primary Suite

Last update: 11/7/2023

### KITCHEN

- 42" Flat panel kitchen cabinetry with stain & paint options
- Center kitchen island with 2 pendant lights
- Granite countertops
- Single bowl stainless steel sink
- Ceramic tile backsplash
- Stainless Steel appliances: Free standing electric range, multiple-cycle dishwasher, Built-in microwave
- Garbage disposal

### LUXURIOUS BATHS

- Primary Bath:
  - 3 light vanity over each sink (2 total)
  - Rectangular sinks with cultured marble with Granite or Quartz upgrade (all bathrooms)
  - Flooring-Ceramic tile
  - Glass framed enclosed fiberglass shower with optional upgrade to tile surrounds
  - Optional upgrade to tub & shower
  - Optional 7' shower in Primary bathroom
- Mirrors over vanities in all bathrooms
- Elongated toilets in all bathrooms

### RESILIENT MODERN FLOORING

- Low maintenance EVP: entry foyer, powder room, kitchen/breakfast, laundry room, & secondary bathroom
- Lush wall to wall carpeting in designated areas

### ENERGY SAVING FEATURES

- LED Traverse lights for energy efficient lighting
- Electric 50 gallon water heater
- Zoned HVAC Programmable thermostat(s)
- Housewrap for moisture control
- Electric furnace

### WARRANTY

- First Year "Fit and Finish" Builder's Warranty
- 2-10 HomeBuyers Warranty®

In a continuous effort by Chafin Communities to improve the quality of your home, we reserve the right to change features, options, plans, and specifications without notice. **Floor plans and elevation renderings are artists' concepts for marketing purposes only AND DO INCLUDE UPGRADES not available at all communities - see sales agent for details.** Elevations and floor plans will vary based on actual homesite (Chafin Communities may be required to build the home in a mirror image to the floor plans shown) due to construction and/or building design requirements of the homesite. Significant changes may be made during or after the construction of the model homes. Chafin Communities reserves the right to modify, relocate or eliminate any or all of the features, specifications, plan utilities, design, or shape thereof without notice or obligations to the purchaser. Please see your onsite sales associate for additional information.

**CHAFIN**  
**COMMUNITIES**  
*More To Come Home to...*  
*A Berkshire Hathaway Company*

*More to Come Home to...*



## SMART HOME



**Chafin Homes come SET UP with Smart Home Features**



**Includes White Glove Set Up By  
Our In-House Technician**

Kwikset Halo Smart Front Door Lock • Ecobee Smart Thermostat  
Two Smart Light Switches • Ring Doorbell • Echo Show 8"  
(Colors will vary based on your home)

*NOTE: For homes started  
AFTER 1/1/2022*

In a continuous effort by Chafin Communities to improve the quality of your home, we reserve the right to change features, options, plans, and specifications without notice. **Floor plans and elevation renderings are artists' concepts for marketing purposes only AND DO NOT INCLUDE UPGRADES not available at all communities - see sales agent for details.** Elevations and floor plans will vary based on actual homesite (Chafin Communities may be required to build the home in a mirror image to the floor plans shown) due to construction and/or building design requirements of the homesite. Significant changes may be made during or after the construction of the model homes. Chafin Communities reserves the right to modify, relocate or eliminate any or all of the features, specifications, plan utilities, design, or shape thereof without notice or obligations to the purchaser. Please see your onsite sales associate for additional information.

**CHAFIN**  
**COMMUNITIES**  
*More To Come Home to...*  
A Berkshire Hathaway Company



**CHAFINCOMMUNITIES.COM**

Subject to errors, omissions, and changes without notice. Believed accurate, but NOT warranted.

# One Stop Financing

## With our Partner Lender



### Closing Cost Incentives

Receive full incentives offered in all Chafin Communities with approved lender. If you use another lender, you no longer qualify for the incentives.

### Smooth Closing Experience

Our Team has a decades long seamless working relationship with Chafin. Combine that with Silverton's high customer ratings, and you have a great closing experience..

### Wide Range of Mortgage Options

Silverton Mortgage is a full service mortgage provider that offers a wide range of mortgage options: FHA, VA, Non-conforming, Portfolio and more. They add new programs daily.

### Competitive Interest Rates

Silverton Mortgage offers market competitive interest rates. This ensures you lower closing costs and a lower overall cost of your mortgage.

### It Will Not Affect Credit Score

Silverton Mortgage will pull your credit and it can still be pulled again by another lender without hurting your credit score if you do it within 30 days. See agent for more details.\*

### It is No Obligation, Free & Easy

There is no obligation to use Silverton Mortgage. You can choose up until you are under contract which lender you prefer. It is free, easy, and takes about 10 minutes.

**Getting Pre-qualified by Silverton is your first step to buying a Chafin home.**

All loans are subject to credit approval. Vanderbilt Mortgage and Finance, Inc., dba Silverton Mortgage, 1201 Peachtree St NE, Ste 2050, Atlanta, GA 30361, 404-815-0291, NMLS #1561, (<http://www.nmlsconsumeraccess.org/>), AZ Lic. #BK-0902616, Licensed by the Department of Financial Protection and Innovation under the California Residential Mortgage Lending Act license, Licensed by the N.J. Department of Banking and Insurance, Licensed by PA Dept. of Banking, Rhode Island Licensed Lender. Licensing information: <https://silvertonmortgage.com/licensing/>. \*All information is believed accurate and is subject to change without notice. Equal Housing Opportunity. Clayton Properties Group, Inc., doing business as Chafin Communities, and Vanderbilt Mortgage and Finance, Inc., doing business as Silverton Mortgage ("Silverton") are each indirect, wholly owned subsidiaries of the same parent company. Because of this relationship, the referral of a customer by Chafin Communities to Silverton, may provide Chafin Communities and Silverton with a financial or other benefit.



# The Cheshire



*More to Come Home to...*



**2 Story**  
**3 Bedroom / 2.5 Baths**  
**Approx. 1,850 sq ft**

These photos DO contain many upgrades, please see agent for prices.

In a continuous effort by Chafin Communities to improve the quality of your home, we reserve the right to change features, options, plans, and specifications without notice. **Floor plans and elevation renderings are artists' concepts for marketing purposes only AND DO INCLUDE UPGRADES not available at all communities - see sales agent for details.** Elevations, floor plans, options, and standard features will vary based on actual homesite (Chafin Communities may be required to build the home in a mirror image to the floor plans shown) due to construction and/or building design requirements of the homesite. Significant changes may be made during or after the construction of the model homes. Chafin Communities reserves the right to modify, relocate or eliminate any or all of the features, specifications, plan utilities, design, or shape thereof without notice or obligations to the purchaser. Please see your onsite sales associate for additional information.

**CHAFIN**  
**COMMUNITIES**  
*Move To Come Home to...*  
*A Berkshire Hathaway Company*



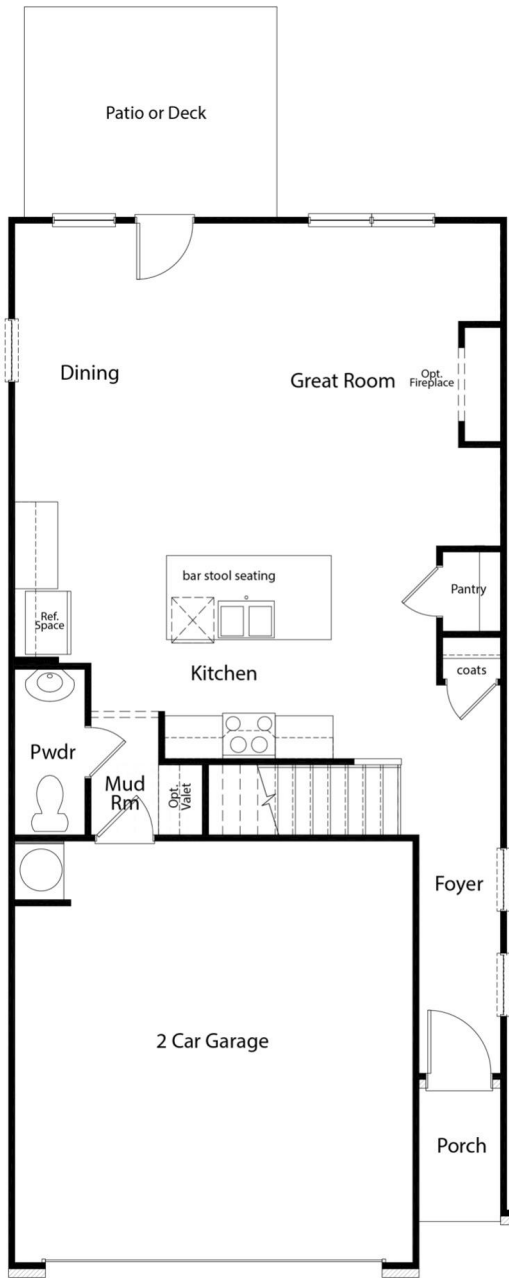
**CHAFINCOMMUNITIES.COM**

Subject to errors, omissions, and changes without notice. Believed accurate, but NOT warranted.

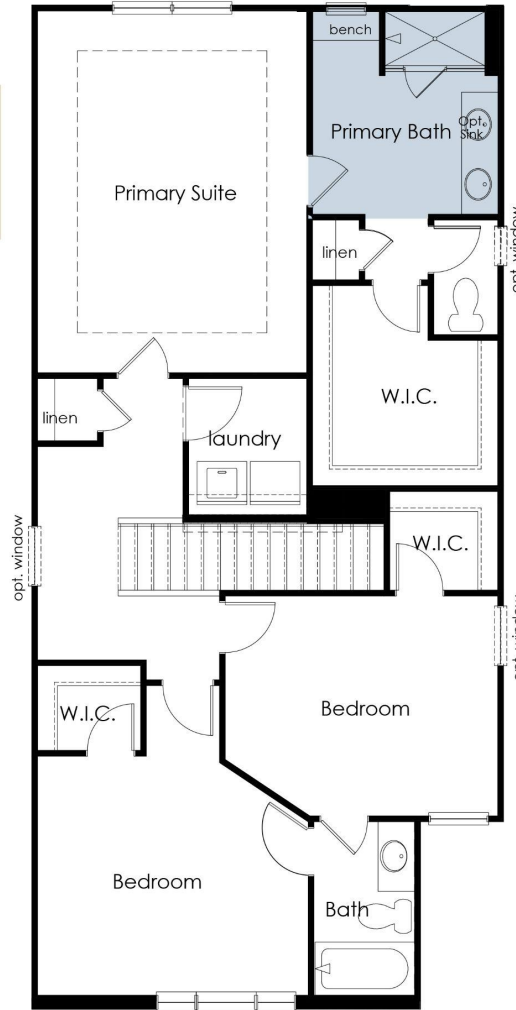
*More to Come Home to...*

# The Cheshire

2 Story / 3 Bedrooms / 2.5 Baths / Approx. 1,850 sq ft



**First Floor**



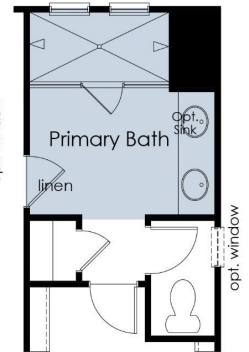
**Second Floor**

**Optional Primary Bath Layouts**

Layouts vary per community see agents for details.



Opt Primary Bath with Tub & Shower



Opt Primary Bath with Enlarged Shower

In a continuous effort by Chafin Communities to improve the quality of your home, we reserve the right to change features, options, plans, and specifications without notice. Floor plans and elevation renderings are artists' concepts for marketing purposes only AND DO NOT INCLUDE UPGRADES not available at all communities - see sales agent for details. Elevations, floor plans, options, and standard features will vary based on actual homesite (Chafin Communities may be required to build the home in a mirror image to the floor plans shown) due to construction and/or building design requirements of the homesite. Significant changes may be made during or after the construction of the model homes. Chafin Communities reserves the right to modify, relocate or eliminate any or all of the features, specifications, plan utilities, design, or shape thereof without notice or obligations to the purchaser. Please see your onsite sales associate for additional information.

**CHAFIN COMMUNITIES**

*More To Come Home to...*  
A Berkshire Hathaway Company



CHAFINCOMMUNITIES.COM

Subject to errors, omissions, and changes without notice. Believed accurate, but NOT warranted.



# The Durham



*More to Come Home to...*



These photos DO contain many upgrades, please see agent for prices.

**2 Story**  
**3 Bedroom / 2.5 Baths**  
**Approx. 1,850 sq ft**

In a continuous effort by Chafin Communities to improve the quality of your home, we reserve the right to change features, options, plans, and specifications without notice. **Floor plans and elevation renderings are artists' concepts for marketing purposes only AND DO NOT INCLUDE UPGRADES not available at all communities - see sales agent for details.** Elevations, floor plans, options, and standard features will vary based on actual homesite (Chafin Communities may be required to build the home in a mirror image to the floor plans shown) due to construction and/or building design requirements of the homesite. Significant changes may be made during or after the construction of the model homes. Chafin Communities reserves the right to modify, relocate or eliminate any or all of the features, specifications, plan utilities, design, or shape thereof without notice or obligations to the purchaser. Please see your onsite sales associate for additional information.

**CHAFIN**  
**COMMUNITIES**  
*Move To Come Home to...*  
*A Berkshire Hathaway Company*

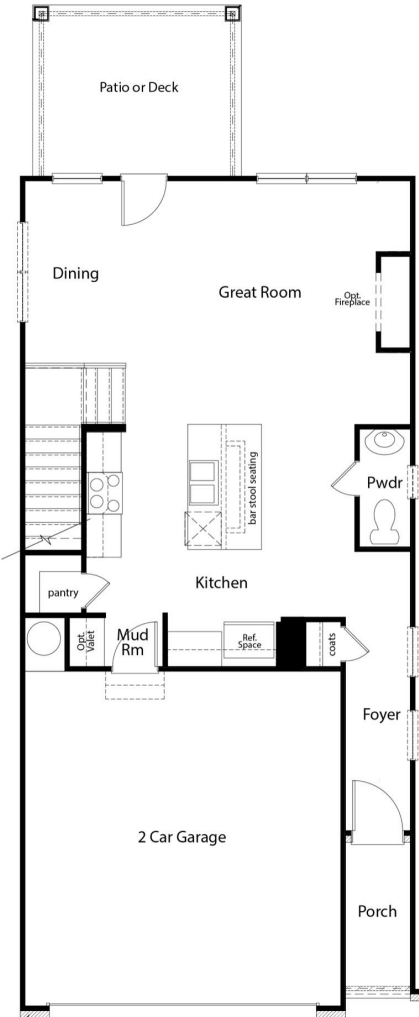


[CHAFINCOMMUNITIES.COM](http://CHAFINCOMMUNITIES.COM)

Subject to errors, omissions, and changes without notice. Believed accurate, but NOT warranted.

# The Durham

2 Story / 3 Bedroom / 2.5 Baths / Approx. 1,850 sq ft

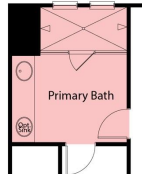


**First Floor**

Primary Bath Standard layout will vary per community



Opt Primary Bath with Tub & Linen

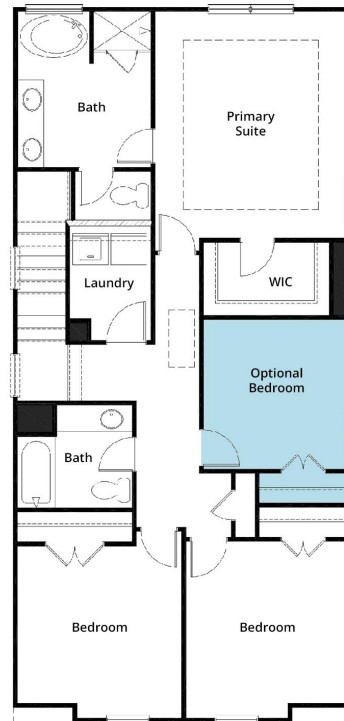


Opt Primary Bath with Enlarged Shower



**Second Floor**

Opt Enlarged Secondary Front Bedroom & Enlarged Primary Bedroom's Closet ILO Loft Up



Opt 4th Bedroom - End Unit Only

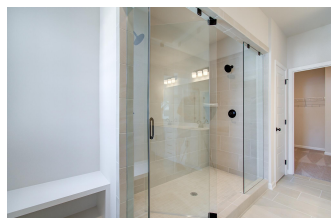
In a continuous effort by Chafin Communities to improve the quality of your home, we reserve the right to change features, options, plans, and specifications without notice. Floor plans and elevation renderings are artists' concepts for marketing purposes only AND DO NOT INCLUDE UPGRADES not available at all communities - see sales agent for details. Elevations, floor plans, options, and standard features will vary based on actual homesite (Chafin Communities may be required to build the home in a mirror image to the floor plans shown) due to construction and/or building design requirements of the homesite. Significant changes may be made during or after the construction of the model homes. Chafin Communities reserves the right to modify, relocate or eliminate any or all of the features, specifications, plan utilities, design, or shape thereof without notice or obligations to the purchaser. Please see your onsite sales associate for additional information.



# The Medlock



*More to Come Home to...*



**2 Story**  
**3 Bedroom / 2.5 Baths**  
**Approx. 1,850 sq ft**

These photos DO contain many upgrades, please see agent for prices.

In a continuous effort by Chafin Communities to improve the quality of your home, we reserve the right to change features, options, plans, and specifications without notice. **Floor plans and elevation renderings are artists' concepts for marketing purposes only AND DO NOT INCLUDE UPGRADES not available at all communities - see sales agent for details.** Elevations, floor plans, options, and standard features will vary based on actual homesite (Chafin Communities may be required to build the home in a mirror image to the floor plans shown) due to construction and/or building design requirements of the homesite. Significant changes may be made during or after the construction of the model homes. Chafin Communities reserves the right to modify, relocate or eliminate any or all of the features, specifications, plan utilities, design, or shape thereof without notice or obligations to the purchaser. Please see your onsite sales associate for additional information.

**CHAFIN**  
**COMMUNITIES**  
*Move To Come Home to...*  
*A Berkshire Hathaway Company*



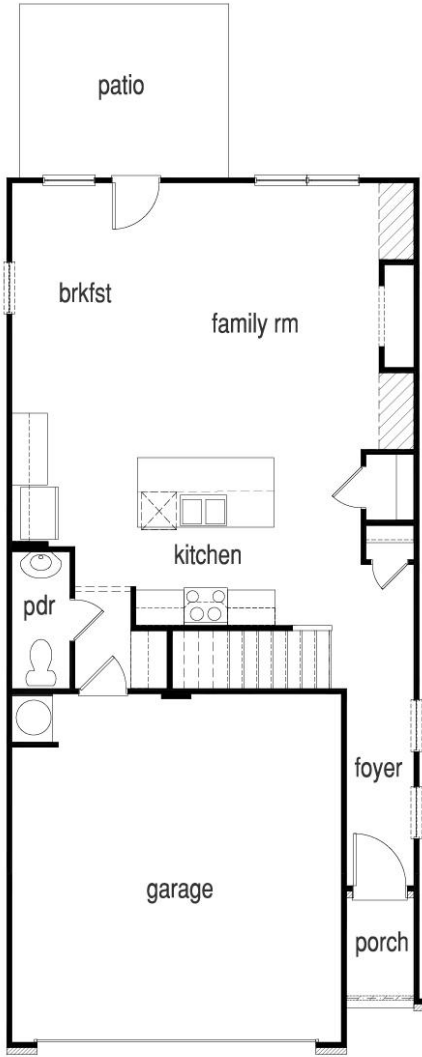
[CHAFINCOMMUNITIES.COM](http://CHAFINCOMMUNITIES.COM)

Subject to errors, omissions, and changes without notice. Believed accurate, but NOT warranted.

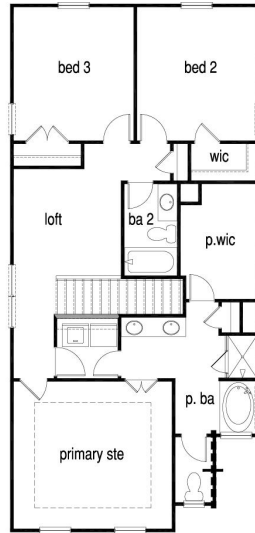
*More to Come Home to...*

# The Medlock

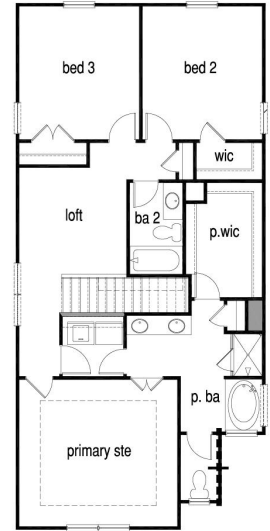
2 Story / 3 Bedroom / 2.5 Baths / Approx. 1,850 sq ft



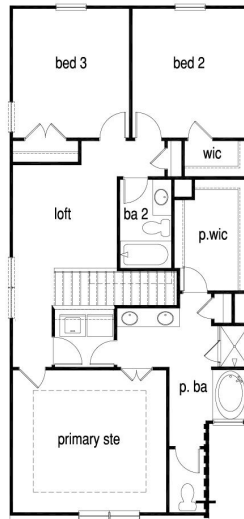
## First Floor



## Second Floor CB1



## Second Floor CB2



## Second Floor CB3

In a continuous effort by Chafin Communities to improve the quality of your home, we reserve the right to change features, options, plans, and specifications without notice. Floor plans and elevation renderings are artists' concepts for marketing purposes only AND DO NOT INCLUDE UPGRADES not available at all communities - see sales agent for details. Elevations, floor plans, options, and standard features will vary based on actual homesite (Chafin Communities may be required to build the home in a mirror image to the floor plans shown) due to construction and/or building design requirements of the homesite. Significant changes may be made during or after the construction of the model homes. Chafin Communities reserves the right to modify, relocate or eliminate any or all of the features, specifications, plan utilities, design, or shape thereof without notice or obligations to the purchaser. Please see your onsite sales associate for additional information.

**CHAFIN**  
COMMUNITIES  
*Move To Come Home to...*  
A Berkshire Hathaway Company