

# The Kingston



*More to Come Home to...*



**Elevation A**



**Elevation B**



**Elevation C**



**Elevation PB1**



**Elevation PB2**

**1-1.5 Stories**  
3 Bedrooms / 2.5 Bathrooms

Option for 4th Bedroom, Loft, and  
3rd Bathroom on second floor

**Approx. 2304 - 3064 sq ft**

These photos DO contain many upgrades, please see agent for prices.

In a continuous effort by Chafin Communities to improve the quality of your home, we reserve the right to change features, options, plans, and specifications without notice. **Floor plans and elevation renderings are artists' concepts for marketing purposes only AND DO INCLUDE UPGRADES not available at all communities - see sales agent for details.** Elevations, floor plans, options, and standard features will vary based on actual homesite (Chafin Communities may be required to build the home in a mirror image to the floor plans shown) due to construction and/or building design requirements of the homesite. Significant changes may be made during or after the construction of the model homes. Chafin Communities reserves the right to modify, relocate or eliminate any or all of the features, specifications, plan utilities, design, or shape thereof without notice or obligations to the purchaser. Please see your onsite sales associate for additional information.

**CHAFIN**  
**COMMUNITIES**  
*Move To Come Home to...*  
*A Berkshire Hathaway Company*

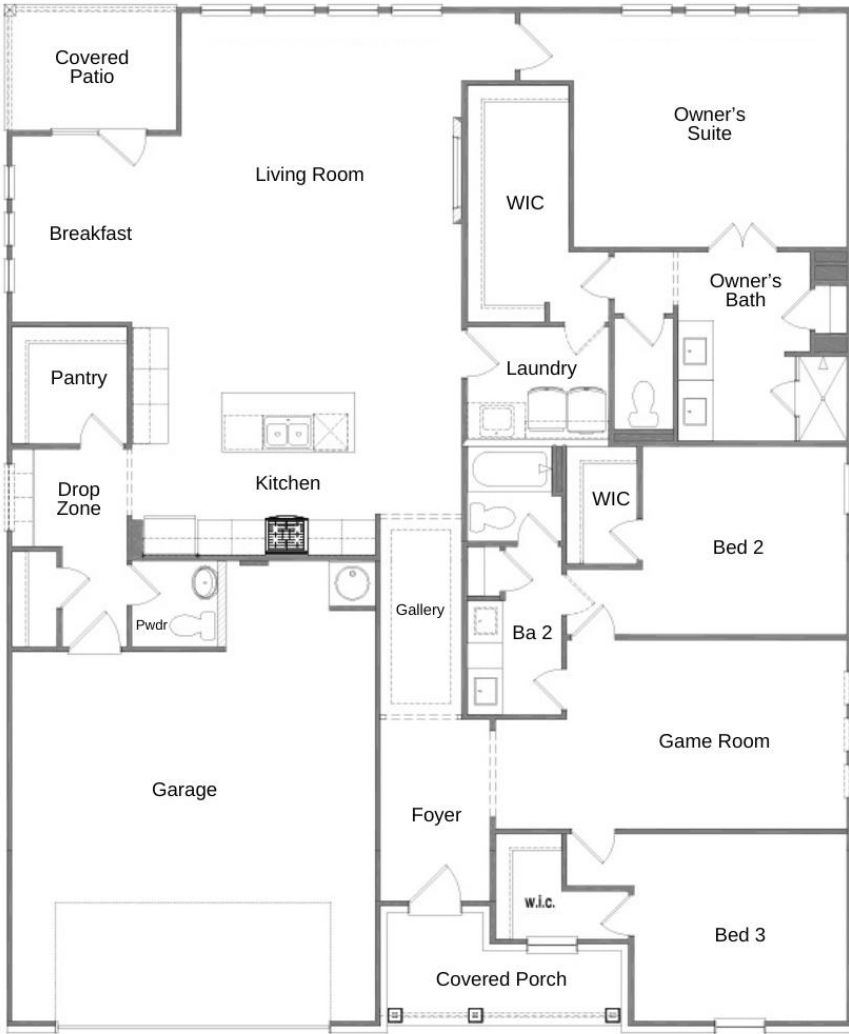


[CHAFINCOMMUNITIES.COM](http://CHAFINCOMMUNITIES.COM)

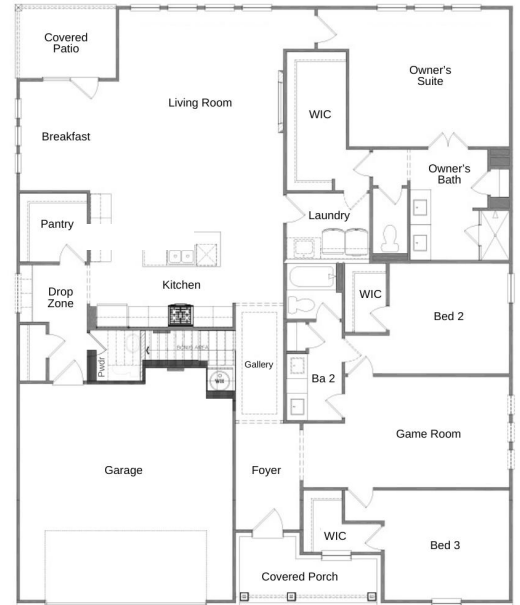
Subject to errors, omissions, and changes without notice. Believed accurate, but NOT warranted.

*More to Come Home to...*

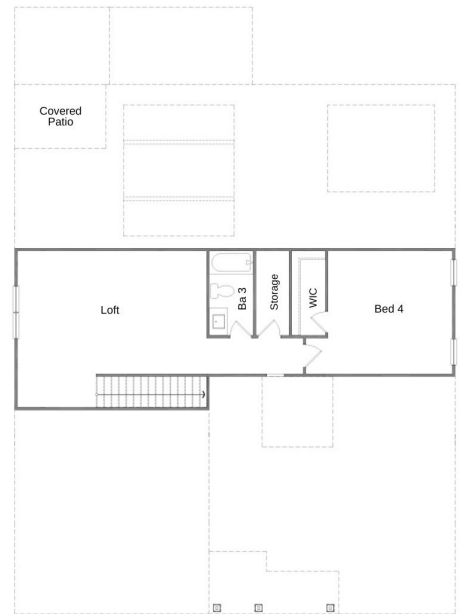
# The Kingston 1-1.5 Story / 3-4 Bedrooms / 2.5-3.5 Bathrooms / Approx. 2304- 3064 sqft



## First Floor



## First Floor w Bonus



## Second Floor

In a continuous effort by Chafin Communities to improve the quality of your home, we reserve the right to change features, options, plans, and specifications without notice. Floor plans and elevation renderings are artists' concepts for marketing purposes only AND DO NOT INCLUDE UPGRADES not available at all communities - see sales agent for details. Elevations, floor plans, options, and standard features will vary based on actual homesite (Chafin Communities may be required to build the home in a mirror image to the floor plans shown) due to construction and/or building design requirements of the homesite. Significant changes may be made during or after the construction of the model homes. Chafin Communities reserves the right to modify, relocate or eliminate any or all of the features, specifications, plan utilities, design, or shape thereof without notice or obligations to the purchaser. Please see your onsite sales associate for additional information.

**CHAFIN**  
**COMMUNITIES**  
*More To Come Home to...*  
*A Berkshire Hathaway Company*



CHAFINCOMMUNITIES.COM

Subject to errors, omissions, and changes without notice. Believed accurate, but NOT warranted.